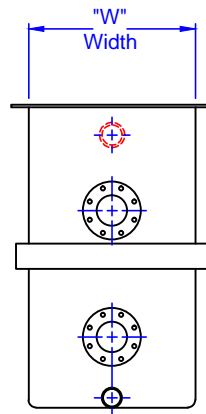
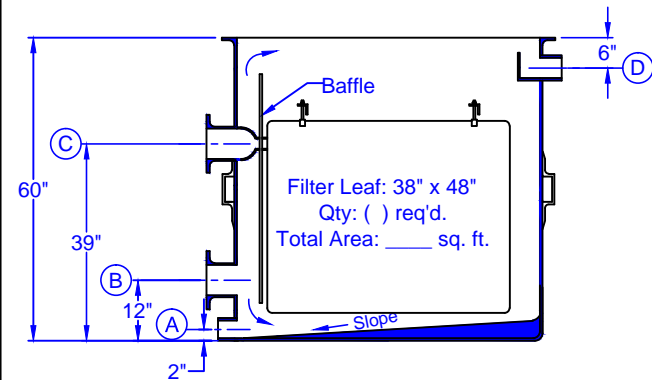


Elevation



End Elevation



Section View

Number of Elements	Filter Area Sq. Ft.	A Drain	B Inlet	C Outlet	D Overflow	"W" Width	Weight lbs.
4	100	4"	4"	4"	4"	28"	439
5	125	4"	4"	4"	4"	33"	495
6	150	4"	6"	6"	6"	38"	537
7	175	4"	6"	6"	6"	43"	579
8	200	4"	6"	6"	6"	48"	639
9	225	4"	6"	6"	6"	53"	679
10	250	4"	6"	6"	6"	58"	719
11	275	4"	6"	6"	6"	63"	765
12	300	4"	8"	8"	8"	68"	806

GENERAL NOTES

1. Tank laminate is constructed of alternate layers of fiberglass fabric and resin and a C-glass surfacing veil.
2. Resin system shall be a corrosion grade isophthalic polyester suitable for the service conditions.
3. Construction shall be in the contact molded method in accordance to NBS PS 15-69 Product Standard.
4. Flange shall be drilled to ANSI 150 lb. standards.
5. Dimensional tolerance shall be +/- 1/8".
6. Drain and overflow connections shall be standard PVC socket weld fittings.
7. Tank requires full bottom support.
8. Flange boltholes straddle centerlines.
9. Nozzle "B" must have a minimum height of 12", otherwise it can be located vertically as desired. Nozzle "B" can also be located on 60" side of tank . Baffle must be between inlet port and filter leaves.

MER-MADE FILTER

PO Box 306 Denmark, SC 29042

P: 803-793-4265 F: 803-793-4332

FRP Vacuum D. E. Filter Tank 38 x 48 Corner Leaves

Customer:

Project:

Dr.By.: C.S.
Date: 07-22-20

Dwg. No.
T-14285